

NetWoRM -

Net-based Training for Work-Related Medicine

Web-based patient cases for training of:

- Medical students
- Physicians in training for Occupational Medicine (OM)
- Continuing Medical Education (CME)
- Occupational Health nurses
- Secondary School students

Objective:

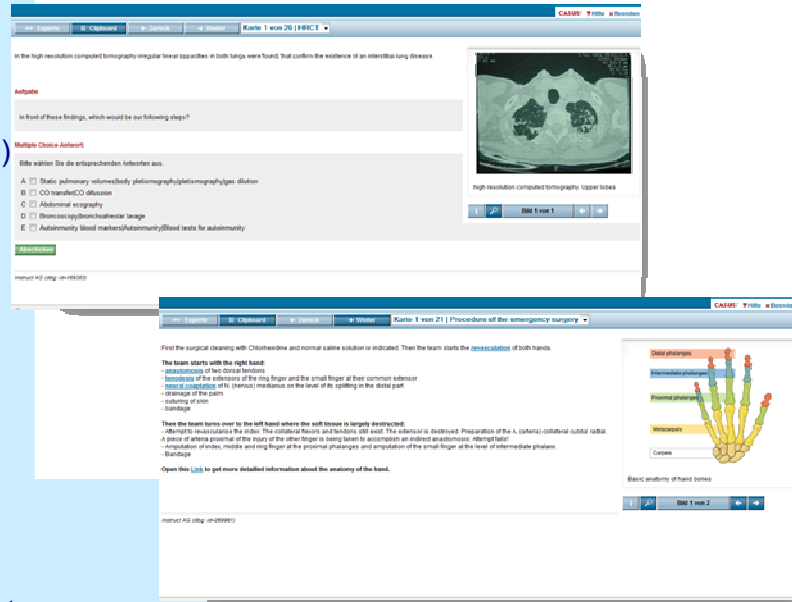
- Set-up an international network for case-based e-learning in OM
- Ensure high quality of training in OM all over the world

Excerpt from case pool:

- 6 cases Latin America
- 10 CME-cases under way
- 4 cases for secondary school students, one already available in English
- A total of 57 cases in 6 languages
- cases available from the following subject areas:
 - Occupational and Environmental Medicine
 - Respiratory and musculoskeletal system
 - Health service and methods

Background of NetWoRM

Occupation has a large impact on health all over the world. In order to prevent and recognize occupational diseases, medical students, staff and physicians should know about the potentially causal relationship between profession and diseases as well as the basic legal aspects of OM.



One possibility to complete and improve traditional training in OM is case-based e-learning. The students considered this learning method as very effective. However, the creation of high quality e-learning cases is time consuming and costly. Therefore the aim of NetWoRM is to share these cases on an international base. Cases are created, translated and adapted to the local needs.

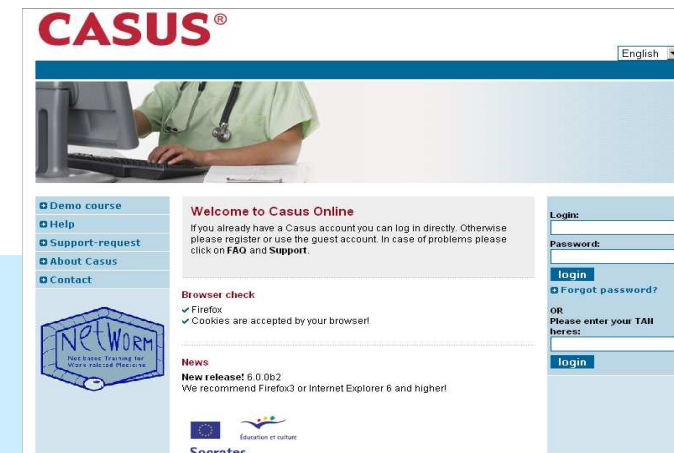
E-learning platform CASUS

The cases are created using the CASUS® software (www.instruct.de)

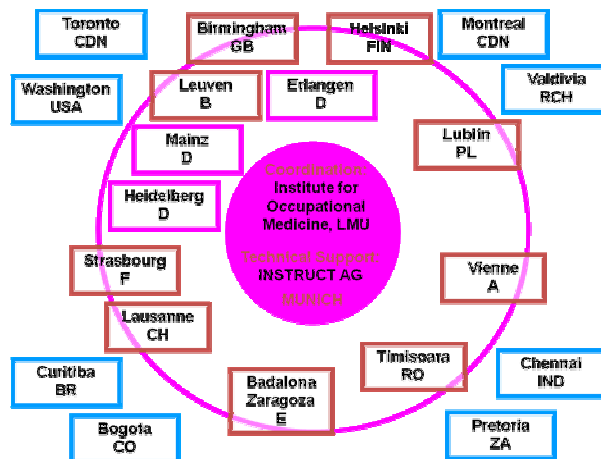
The platform can be handled easily without previous knowledge or experience in e-learning.

Three main features are offered:

- Player modus for learner
- Author modus for the creation of interactive multimedia cases
- Course manager for the setup of courses and the evaluation



International Partners



- German Partners (more than 10 universities)
- European Partners (Minerva)
- International Partners

Interested?

Contact:

Prof. Dr. Katja Radon, MSc

Head of the Unit for Occupational and Environmental Epidemiology & Net Teaching Institute for Occupational and Environmental Medicine

Ludwig-Maximilians-University Munich

Ziemssenstr. 1; D-80336 Munich; Germany

Phone: +49-89-5160-2485

Fax: +49-89-5160-4954

E-Mail: katja.radon@med.uni-muenchen.de

Website: www.networm-online.net



External Funding

- Klaus Tschira Foundation (KTS)
- German Academic Exchange Service (DAAD)
- Bavarian Virtual University (vhb)
- European Union (Minerva Sokrates program)
- BAYHOST

Bildung und Kultur
Sokrates
Minerva

This project has been funded with support from the European Commission. This publication [communication] reflects the views only of the author, and the Commission cannot be held responsible for any use which may be made of the information contained therein. *

Net-based Training for Work-Related Medicine

www.networm-online.net